

State Power and Elite Autonomy: The Board Interlock Network of Chinese Non-Profits

Ji Ma
Simon DeDeo

SFI WORKING PAPER: 2016-06-011

SFI Working Papers contain accounts of scientific work of the author(s) and do not necessarily represent the views of the Santa Fe Institute. We accept papers intended for publication in peer-reviewed journals or proceedings volumes, but not papers that have already appeared in print. Except for papers by our external faculty, papers must be based on work done at SFI, inspired by an invited visit to or collaboration at SFI, or funded by an SFI grant.

©NOTICE: This working paper is included by permission of the contributing author(s) as a means to ensure timely distribution of the scholarly and technical work on a non-commercial basis. Copyright and all rights therein are maintained by the author(s). It is understood that all persons copying this information will adhere to the terms and constraints invoked by each author's copyright. These works may be reposted only with the explicit permission of the copyright holder.

www.santafe.edu



SANTA FE INSTITUTE

State power and elite autonomy: The board interlock network of Chinese non-profits

Ji Ma^{a,b}, Simon DeDeo^{c,d,e,f,*}

^a*Indiana University Lilly Family School of Philanthropy, 301 N. University Boulevard,
Indianapolis, IN 46202, USA*

^b*Intetix Institute, Beijing 100875, PRC*

^c*Center for Complex Networks and Systems Research, Department of Informatics,
Indiana University, 919 E 10th St, Bloomington, IN 47408, USA*

^d*Program in Cognitive Science, Indiana University, Bloomington, IN 47405, USA*

^e*Ostrom Workshop in Political Theory and Policy Analysis, 513 N Park Avenue,
Bloomington, IN 47408, USA*

^f*Santa Fe Institute, 1399 Hyde Park Road, Santa Fe, NM 87501, USA*

Abstract

In response to failures of central planning, the Chinese government has experimented not only with free-market trade zones, but with allowing non-profit foundations to operate in a decentralized fashion. A network study shows how these foundations have connected together by sharing board members, in a structural parallel to what is seen in corporations in the United States. This board interlock leads to the emergence of an elite group with privileged network positions. While the presence of government officials on non-profit boards is widespread, state officials are much less common in a subgroup of foundations that control just over half of all revenue in the network. This subgroup, associated with business elites, not only enjoys higher levels of within-elite links, but even preferentially excludes government officials from the nodes with higher degree. The emergence of this structurally autonomous sphere is associated with major political and social events in the state-society relationship.

Keywords: board interlock, NGO, civil society, elites, state corporatism, state power, state-society relationship, social network, People's Republic of China, non-profit foundations, common knowledge

*To whom correspondence should be addressed.

Email addresses: `ma47@indiana.edu` (Ji Ma), `simon@santafe.edu` (Simon DeDeo)

1. Introduction

1.1. Board Interlock and State Power

When the boards of different organizations have members in common—when their boards *interlock*—they can synchronize both their values and behaviors in the absence of explicit central control [1, 2, 3, 4, 5]. Organizations that share key personnel in this fashion can reap the benefits of network connections and solve coordination problems [6, 7].

Board interlock is widespread in free-market societies, where it emerges in the business sector as a response to decentralization [8, 9, 10, 11, 12, 13, 14]. Board interlock is also seen in the donation-based charity sector, where it helps coordinate efforts and share of information [15], and enhances both a nonprofit’s perceived legitimacy and its capacity to acquire resources [16]. In the United States, board interlock spans multiple sectors, and links together the nonprofit, commercial, and political worlds [17].

Much less is known about how interlock emerges as a response to the problem of decentralization within authoritarian governments. An authoritarian government that decentralizes may do so in part to take advantage of the benefits that accrue when many different problem-solvers operate with limited communication [18]. As in the non-authoritarian case, organizations may respond to decentralization by sharing board members in order to coordinate.

For a government concerned with the dangers of independent agents, this interlock may be a benefit. The coordination induced by the resultant board interlock may reduce the independence between organizations and make the system easier to control. However, these benefits exist only if the government maintains control of the most central organizations in the resulting network. If it does not, board interlock may shift from an opportunity to a threat: organizations may not only reap the benefits of coordination, but now do so by coordinating around an independent agent.

Board interlock is crucial to understanding “infrastructural” forms of state power [19]. Infrastructural power refers to the capacity of the state to act through civil society, by penetrating, and thereby influencing, its institutions. Infrastructural power is often contrasted with despotic power: the ability of state elites to act without formal negotiations with civil society, through top-down, unilateral action. The coordination enabled by board

interlock provides an important means by which a state might amplify infrastructural power—or, conversely, a means by which non-governmental actors may reduce it. To study how these tensions play out in the state-society relationship in the real world, we present here the first network-based study of the rapidly-growing nonprofit sector in mainland China.

1.2. How Much Autonomy? A Brief Introduction to the Chinese Nonprofit Sector

While charities and “social organizations” appear early in China’s history, the majority were closed down during the Cultural Revolution in the 1960s and 1970s [20]. The nonprofit sector only re-emerged during the reform era of the 1980s, as part of the government’s push to decentralize and devolve power away from direct state control [21, 22].

Because the sector has expanded so rapidly, many scholars today ask whether or not it represents the rise of a Chinese civil society: a dense network of groups that bring together citizens to accomplish activities outside of government control.

The concept of civil society has its origin in the 19th Century, when Alexis de Tocqueville connected the early stages of American democracy to the growth of voluntary associations of ordinary citizens for everything from the promotion of temperance to the founding of schools [23]. Ever since, political theorists and sociologists have tried to understand the role that these associations might play in the liberalization of authoritarian regimes and the early stages of democratic rule [24]. The concept of civil society has continued to evolve; in a recent study of the illegal NGO sector within China, Ref. [25] quotes Ref. [26] to describe a neo-Tocquevillian concept of civil society as “an autonomous sphere of social power within which citizens can pressure authoritarians for change, protect themselves from tyranny, and democratize from below”. For these reasons, hard-line members of the Chinese government are liable to view the very concept of civil society as a “trap” [27].

Yet the existence of non-governmental associations does not necessarily imply a civil society in the Tocquevillian mode or even a threat to authoritarian rule. While countries in the West have accepted nonprofits that operate independent of government control, foundations in China must contend with a one-party system potentially intolerant of organizations that might hold it accountable or draw attention to its deficiencies [25]. Concerns about the lack of autonomy in the nonprofit sector have led many observers to talk in

terms of *state-corporatism* [28, 21], where the nonprofit sector is an auxiliary and dependent system of the state. In the classic definition of Ref. [29], the relevant organizations in state-corporatism parallel those of government agencies, being “singular, noncompetitive, hierarchically ordered, sectorally compartmentalized, interest associations exercising representational monopolies”.

1.3. *Networked Civil Society*

For these reasons, a central theme of research into the Chinese nonprofit world is how much autonomy exists in the presence of state control [21, 30, 31, 32]. Previous studies have documented the strategies and tactics of individual nonprofits, either through case studies or the identification of qualitative patterns of behavior across multiple cases [33, 34, 35, 22].

Civil society, however, is more than just the existence, and even the autonomy, of non-governmental organizations. It is how these organizations connect together, in a horizontal fashion, to form something more than a catalog of distinct endeavors [36]: organized “multiple, overlapping, and intersecting sociospatial networks of power” [37].

To understand civil society in China, in other words, we must study not only how the state acts on individual foundations, but also how it interacts with the networks through which these foundations share personnel, information, and resources. The infrastructural power the state exercises may be both enhanced, and dissipated, by the horizontal connections between the organizations it penetrates. Board interlock is one of the primary mechanisms for this self-organization to take place, and yet we know next to nothing about how this process has unfolded, and the results of this evolution in twenty-first century China.

We will study the Chinese state-society relationship by looking at the evolution of the non-profit board interlock network. To do this, we draw on a large dataset of officially-registered nonprofit foundations. This dataset records not only important information about each foundation, but also the list of board members, enabling us to construct the board interlock network. Our analysis can then operate at two levels simultaneously: (1) at the level of the individual foundation, and (2) at the level of the network, where edges between foundations are defined by the sharing of board members.

At the level of individual foundations, our data show the high level of presence of state officials on foundation boards. Examination of how the number of government officials varies by working areas and foundation type

shows how the presence of state officials correlates with activities, and legal statuses, that the government is expected to be most concerned to control.

At the network level, we find that board appointments connect together a significant fraction of legal Chinese foundations into a single network. Our results show the existence of network elites, associated with business entrepreneurs and their foundations, that form preferential ties to each other. This subnetwork appears to preferentially exclude government officials from its most central nodes, providing evidence that the network acts in part to frustrate the magnification of individual-level penetration that might be expected to arise in the presence of board interlock.

Our findings suggest the emergence of a form of network autonomy that exists despite high levels of individual-level government appointments to non-profit boards. At the same time, the association of this network autonomy with the business elite—rather than “ordinary” citizens—means that this autonomy may not lead to the kind of pluralism associated with a Tocquevillian civil society.

2. Methods

2.1. Dataset and Network Construction

Our primary dataset is the Research Infrastructure of China Foundations (RICF [38]), a database containing the records of the 3,344 legally-registered foundations within mainland China between 1981 and 2013. Information about each foundation is drawn from six different sources, including both official government reports and information submitted to the government, or reported on websites, by the foundations themselves. Comparing RICE’s counts to other reference sources, the RICE’s data appears to be at least 90% complete. The data is restricted to foundations allowed to conduct fundraising; while these foundations are outnumbered by the much larger number of less formal “associations”, they are the most developed form of non-profit institution, and control just over 76% of all non-profit funding in the nation.¹

¹The 3,344 foundations in the RICE database control approximately 35.3 billion RMB (B¥); this amounts to a large fraction of the 45.9 B¥ of non-profit funding, tracked by the Ministry of Civil Affairs of China in 2013, for all “associations” and related classifications [39].

RICF strives to be as comprehensive as possible; it includes foundations that may, for example, may be essentially defunct. Within RICE data is a subset of foundations that have undergone an evaluation process, which rates the foundations according to standard criteria; foundations who receive a “3A” or above (3A+) are considered to have passed this evaluation.

For each foundation, RICE logs the names, gender, and date of birth of the board members. This allows us to resolve name collision and therefore construct the board interlock network: two foundations are connected when they share one (or more) board members. For simplicity in this analysis, our network is unweighted: we consider only the presence or absence of at least one shared member, and do not distinguish whether links are created by sharing presidents, secretaries, or ordinary members. The RICE data also contains the date of incorporation for each foundation, allowing us to study how the final network assembles over time.

2.2. Variables

Three critical variables help us characterize foundations at the individual level.

Public Fundraising vs. Non-Public Fundraising. The main legal distinctions in the Chinese nonprofit sector governs the scope of fundraising. “Public fundraising” foundations are allowed to raise money from the general public—for example, through fund drives and advertising—while “non-public fundraising” foundations may not (as shorthand, we refer to these as “public” and “non-public” hereafter). Moreover, public foundations are further constrained by geography; “central-level” foundations may raise funds at the national scale, while province-level and city-level foundations are restricted geographically. The Chinese Charity Law, effective from 1 September 2016, will nullify the distinction between public and non-public fundraising; however, the ability of organizations to raise funds from general public will still be controlled by license issued from the state.²

Politically Sensitive vs. Politically Non-Sensitive. We supplement the RICE by hand-coding the foundations’ mission statements by whether or not they are involved in a potentially controversial or politically sensitive area (“sensitive” vs. “non-sensitive”). Tracking this variable allows us to look

²Xinhua News Agency: NPC hopes charity law can help poverty fight, available at http://news.xinhuanet.com/english/2016-03/09/c_135172544.htm, last accessed June 14, 2016.

for systematic attempts to selectively control certain topics. If a foundation has one or more of the following characteristics it is coded as “sensitive,” otherwise it is coded as “non-sensitive” [25, 30, 40, 41]:

1. Involving advocacy, *e.g.*, human rights, labor issues, and environmental policy.
2. Involving international affairs, *e.g.*, programs promoting international cultural exchanges.
3. Involving religious or ethnic issues, *e.g.*, Christian activities and Tibet issues.
4. Involving the police or the legal system, or related “social stability” (*weiwen*) issues.

In order to control the researchers’ bias toward coding, two assistants, who were unaware of the research purpose, were asked to independently classify foundations, solely according to the information provided in their mission statements. Discrepancies between the two assistants were finalized by a third person who is a doctoral candidate in China studies.

State Power. Our main tracker of state penetration into the non-profit sector is the number of government officials in senior management positions. The presence of state officials on a foundation board is a clear mechanism by which the state can exercise control; at the same time the state, at least explicitly, forbids government officials from serving on these boards. Official law (Article 23) is that “principals” (the board chair (president), deputy chair, or secretary general) should not be currently employed by the state.³

Law against direct government involvement are commonly violated. The standard annual reporting forms even asks foundations to report the number of principals who are government staff; a non-negligible fraction (18%) report non-zero numbers of current government officials. As a different measure of state influence, we hand-coded the 3A+ foundations, noting whether or not the board president is a current or retired government official. Hand-coding is a difficult and laborious task; because it can be difficult to ascertain the

³“Regulations on the Management of Foundations” (4 February 2004), Article 23; original text available at <http://www.mca.gov.cn/article/yw/shjzgl/fgwj/201507/20150700850200.shtml>, see English translation at <http://www.cecc.gov/resources/legal-provisions/regulations-on-the-management-of-foundations-chinese-text>, last accessed 18 April 2016.

current status of individual, our 3A hand-coding includes both retired and currently-serving government officials, and is thus not directly comparable to the self-reporting set.

We thus count the number of government officials in three different ways. The RICF counts the number of *current* government officials who serve as principals; it also counts the number of simultaneously *retired* and *senior* government officials who serve as principals; and (for a hand-coded subset) it counts the number of either current or retired government officials who serve as the board president. Note that the Article 23 law does not forbid retired government officials from serving as board principals, and these people may well still represent government influence [42].

3. Results

3.1. Individual-Level Statistics and the Presence of State Power

Table 1 shows the breakdown of the foundations in the RICF data. Collectively, the 3,344 foundations in our data have a combined income of 35.3 billion RMB; approximately 5.5 billion USD at current exchange rates. Paralleling Tocqueville’s accounts of the diverse initiatives of citizens in 19th Century America, foundations in contemporary China range in activity in everything from the promotion of the board game (Go) to legal aid for the indigent. The majority are restricted to non-public fundraising, and work in non-sensitive areas. These non-public foundations control just over half of the total yearly nonprofit revenue in the country.

Despite laws to the contrary, our results confirm persistent and high levels of state involvement in the governance of foundations. Table 2 shows the relationship between fundraising scope and activity, relying on both the hand-coded 3A subsample that tracks the affiliations of board presidents, and official self-reports in the full database. Because the 3A hand-coding includes retired officials, the two methods track slightly different phenomena.

Both methods also confirm that the presence of government officials is less for non-public foundations. The government is most involved in foundations that are able to raise funds from the general public. (Self-reports, but not our hand-coding, show additional supervision when the foundation itself is associated with sensitive activities. Because this signal does not appear in the hand-coded subset, it may be best-explained by differing incentives: public foundations involved with sensitive activities may be more willing to report

government officials on their boards, despite the fact that this violates Article 23.)

3.2. Board Interlock: Super-Connectors and Elites

Board interlock is widespread. A significant fraction of the foundations are integrated into the network: of the 3,344 foundations, 1,411 (42%) share board members with at least one other foundation. As shown in Table 3, foundations at the central level are the most likely to be connected. Both public and private foundations show significant network integration. A large fraction of this network connects together, into a single giant component that contains 1,022 foundations (see Fig. 1).

While the existence of board interlock parallels the corporate cases studied in the West, there are significant differences. Most notably, the network is not small world: the average path length between nodes in the giant component is 7.71, and the network diameter is 27; in both cases much larger than the corporate board interlock seen in the United States [13].

The board interlock network in Chinese foundations, in other words, has a tendency to isolate nodes from each other. Even if we restrict to the 77 central-level foundations in the giant component, the diameter remains large (9 steps); by comparison, the network of Fortune 800 firms in the 1970s, nearly ten times larger, had a diameter of five [43]. Chinese foundations connect to each other, but the existence of these long paths shows that board interlocks are fundamentally limited in their ability to coordinate action on the very largest scales.

While the network has few shortcuts and hubs that connect otherwise distant nodes, it is also the case that a small number of foundations have very high degree—they share an unusually large number of board members with other foundations. We show the network degree distribution in Fig. 2. The existence of these “super-connectors” can be empirically confirmed by testing for heavy-tailed degree distributions; standard methods strongly prefer a log-normal distribution to both an exponential (*i.e.*, random-graph) and power-law fit [44, 45].

These super-connectors appear to preferentially connect to each other, suggesting the existence of highly connected elite groups (the “rich-club phenomenon”, first noted by Ref. [46]). Fig. 3 shows the rich-club coefficient in the full, the public, and the non-public subnetworks. In all cases, nodes with higher degree are more likely to connect to each other than in a null model

that preserves the node degree distribution but otherwise shuffled connections. Note that the k -core for the public network is much smaller than the non-public; if a public foundation has high-degree in the full network, it is usually because it connects to non-public foundations.

If we code nodes by the board president’s profession, we find that the highest degree nodes include both the government and the business elite. Of the ten highest-degree foundations, six are associated with businesses, four with government. For example, the most connected foundation is the YouChange China Social Entrepreneurs Foundation, set up to encourage philanthropic giving by wealthy entrepreneurs; the second is the Forbidden City Cultural Heritage Conservation Foundation, which manages the state-owned historical treasure. The top ten most connected board members are also a mixture of both government and business elites; three are business elites, six are current government officials, including members of the National People’s Congress, the CPPCC, and the Guangzhou People’s Congress; and one is a retired government official.

Considering the public and non-public networks separately allows us to see how different groups dominate. In the public network, the highest-degree nodes are nearly all associated with the government: of the top ten highest degree foundations, only two have a president with a non-governmental background (a television celebrity, and the head of a hospital). By contrast, six of the ten highest degree nodes in the non-public network are associated with business elites. The highest degree node, for example, the YouChange Foundation, is run by the businesswoman Ping Wang, whose background is in international finance and law.

Board interlock is influenced by both geography and registration level; see Table 4, paralleling classic results for corporate networks, co-located foundations are far more likely to connect [47, 48, 49]. We also find evidence for preferential connections between sensitive foundations; there are $70\% \pm 10\%$ more links between sensitive foundations than found in the null. However, public- and non-public foundations appear to intermix freely and preferences (though detectable) are weak; public foundations are only $16\% \pm 3\%$ more likely to link to each other than null, and only $17\% \pm 3\%$ less likely to link to non-public foundations.

3.3. Network Effects: Penetration of State Power

We next consider how the presence or absence of government officials predicts node degree. We use a multiple linear regression model, with node

degree as the dependent variable and nine independent variables: three variables describing the node’s legal status (public vs. non-public; registration level; evaluation level), four “nuisance” variables describing the intrinsic properties of the foundation (board size, income, sensitive area, and age), and two variables operationalizing the state power: (1) current government officials, and (2) retired, senior-level government officials, the two fields in the main RICF database. We consider both the full network, and the two public and non-public networks separately. The results are shown in Table 5.

The most surprising results concern the relationship between the presence or absence of government officials, and node degree. Foundation degree is (weakly) positively correlated with government presence in the public foundations: nodes with higher degree are more likely to have government officials. However, in the non-public network, high degree is strongly (and significantly, $p < 10^{-3}$) correlated with reduced government presence. When the two networks are joined together, the two effects compete against each other, partially canceling out. Significantly, we find no correlation for the presence or absence of retired senior officials; only the absence of currently-serving officials is predicted by node degree. To allow comparisons between different networks, we use z -score transformed data; for example, in Table 5, the presence of a current official as board principal in the non-public network shifts node degree down by roughly 0.44 standard deviations (controlling for other factors), where a standard deviation is measured for all the nodes in the non-public degree distribution.

Because Table 5’s results rely on self-reports, it is possible that these effects may be driven in part due to differences in self-reporting. We can check for this effect by using the hand-coded 3A subset; these results are shown in Table 6; because the 3A hand-coding tracks only presidents, and includes both current and retired officials, our results here are not strictly comparable to the Table 5 case. The smaller size of this set also means that our signal-to-noise is lower. In this subset, the weaker correlation in the public data is no longer detectable, but we still see the negative correlation between network position and state presence.

3.4. *Network Dynamics: the Emergence of Autonomy*

How did these network effects evolve over time? Fig. 4 shows the three critical metrics for the network evolution: the size of the public and non-public network over time; the changing levels of government presence on

boards; and the evolution of the node degree–government presence relationship. Overlaid on these panels are five critical dates in the recent history of the non-profit sector: (1) 4 June 1989, the Tiananmen Square protests, and the emergence of civil society in China [21]; (2) 15 September 1995, the Fourth World Conference on Women, associated with the accelerating development of civil society in China [50]; (3) 1 June 2004, the day the Regulations on the Management of Foundations, including the above-discussed Article 23, took effect; (4) the Sichuan Earthquake of 12 May 2008, according to Ref. [51], a critical date in the expansion of the non-profit sector’s horizontal linkages; and (5) the 12th Five-Year plan for 2011–2015, introduced March 2011, which devoted a full chapter to “social management innovation” as a key government target. Fig. 5 shows the same plots, but now for the 3A+ hand-coded subset, as discussed above.

Significant numbers of non-public foundations appear soon after the Tiananmen Square protests, though none of the foundations from that year retain 3A+ status today. The effect of the 2004 Regulations on the growth rate is clear: for at least the next five years, it led to literally exponential growth in the number of both public and non-public foundations. The growth rate in the non-public sector was significantly stronger, so that, by 2011, the non-public sector was larger than the public one.

The effect of these same regulations on the levels of government supervision is more complex. The 2004 regulations led to a sudden decline in reported levels of government principals in the non-public network. This is consistent with foundations becoming aware of, and responding to, the restrictions of Article 23. This decline does not appear as strongly in the 3A+ hand-coded subset, however, which suggests one of two explanations: that new foundations are continuing to include government officials, but staying within the letter of the law by including only retired officials, or, that new foundations are continuing to include currently-serving government officials, but under-reporting their presence in official paperwork. The effects of Article 23 are inconsistent: the decline in reported government presence does not occur in the public network; indeed, after 2008, reported government presence starts to rise.

Most interesting are the effects of network growth on the relationship between node degree and government presence. In both the full network, and the 3A+ hand coded subset, we see that the negative relationship between degree and government presence emerges only late in the network history. Today the non-public network acts to systematically exclude government

officials from high degree nodes. In the full network, the negative relationship becomes strong enough to detect soon after the Sichuan earthquake. In the 3A hand-coded subset, the downward trend towards increasingly negative relationships between degree and government presence becomes detectable only after the 2011 Five Year Plan.

4. Discussion

Our results show high levels of state presence throughout the Chinese non-profit world. The appointment of government officials to high-level positions on foundation boards throughout the sector means that the Chinese government continues to hold significant levels of infrastructural power. In Tocqueville’s account of civil society in the 19th Century United States, citizens formed voluntary associations independent of the government itself. Whatever they are doing, the non-profits of 21st century China are far from this 19th Century model, and far from models of post-Soviet democratization in Eastern Europe [24]. Our quantitative results fit with what is widely seen in case studies and fieldwork in China itself: state power may not be complete, but it cannot be ignored.

4.1. *Inconsistent Control*

Our results, however, also show significant differences in the level of governmental penetration of the non-profit sector. This is most apparent among the non-public foundations where, at least officially, only one in ten foundations have a current government official as board principal. The government’s relationship to its foundations is bimodal, with public foundations showing the highest levels of government involvement; not surprisingly, of this more supervised group, the public foundations engaged in politically-sensitive topics receive the greatest levels of supervision of all.

The unusual nature of the non-public foundations becomes apparent at the network level. A set of network elites are at the center of the non-public network. It is the linking patterns of the non-public networks that drives the creation of public node elites as well: high-degree nodes are, in general, high degree because they serve as hubs for the non-public nodes. These elites not only serve as hubs for large numbers of other foundations, but preferentially connect to each other. Qualitative study of the highest degree nodes shows that, in a parallel to the United States [17], the nodes responsible for these

interconnections are, when they are not members of the government, the business elites.

Detection of this rich club effect provides a new view on the development of horizontal relationships that can enable communication and cooperation—a process captured in fieldwork studies of horizontal connections during the 2008 Sichuan Earthquake [51], and a missing piece for understanding the development of state that increasingly devolves government functions to non-government agencies [34].

Our network analysis reveals an unexpected negative relationship between node degree and government presence in the non-public network. Not only is government penetration much lower overall in the non-public foundations, it appears to have even less penetration to the foundations at the network’s center. Horizontal relationships between foundations appear to selectively exclude the top-down “vertical” control of the state in a form of structural autonomy.

4.2. Drivers of Elite Autonomy

A dynamical analysis of network formation, shows how recent the creation of this partially autonomous sphere has been. It becomes detectable in the full network soon after the 2008 Earthquake (the downward trend in the 3A subset appears around this time as well, but only becomes statistically significant in 2011). This result lends new support to the qualitative studies of Ref. [51], which associated the earthquake to lasting cultural, political, and social changes in the non-profit world that led to new forms of autonomous civil society. Ref. [52] supports these results from a different angle, suggesting the increasing importance of private, as opposed to state-controlled, organizations in non-profit relief. In a comparative of study of how government-controlled and private firms responded to the 2008 Earthquake, they found that private firms donated to relief more rapidly, and at greater levels of financial assistance, than state-owned firms. Even many years after the 2008 Earthquake, these effects persist.

One more recent political change comes from the government: the promotion of “social management innovation” (*chuangxin shehui guanli*), a core concept of state policy first introduced in the 4th Plenum of the 16th CCP Congress in 2004 [53, 54]; the 12th Five-Year plan for 2011–2015 elaborated the policy as a governance target, proposing “party leadership, government responsibility, societal cooperation, public participation” as key principles [55], the use of civil society to provide social services, and a correspond-

ingly less rigid approach to controlling it [56]. Our results confirm the impact of these further reforms: in the post-plan era, the negative relationship between government presence and node degree has persisted.

4.3. Civil Society and the Meaning of Network Connectivity

Network connectivity is associated with the ability to form common knowledge [57], and both simulations and theory suggest that nodes of high degree play a crucial role when common knowledge is required for joint action [58]. The negative relationship between node degree and government presence observed in our data then amounts to a form of structural autonomy. Taken at face value, these results seem to suggest that foundations within this non-public subset may be part of the emergence of a new civil society, whose interlocks occur increasingly independently of the state, and whose resultant capacity for independent coordination might even be seen as a threat to authoritarian control.

The identification of these links with a Tocquevillian civil society is complicated, however, by the fact that when the most connected of the non-public foundations are not government in origin, they appear, instead, to be drawn from the business elite. The extensive ties between the state and business then suggest that this civil society is something less than might be expected; ever since the reforms of the 1980s, scholars have suggested that the business elite act as an agent of the government itself [59].

Indeed, this provides a clear alternate explanation: if the highest degree nodes are sufficiently aligned with the government to begin with, they can be allowed to operate without direct supervision—precisely as we see in our data. Whether or not the elite are truly independent of the government, their special position in society, and their ability to influence the government financially [60] suggests that this civil society, such as it is, is far from the pluralist Tocquevillian world of the ordinary citizen.

Understood in the context of the qualitative literature on Chinese foundations, our results are perhaps more consistent with the theory of “consultative authoritarianism”, argued for by Ref. [22], in which the government tolerates increasing levels of autonomy among non-governmental organizations while developing new strategies of indirect control. Networks of state power may overlap with ones defined by economic exchange, but need not be coextensive [37].

Our results show that the government has come to tolerate communities of interlocking associations that operate with lower levels of direct government

presence. Today, the total number of these organizations is small. The new Charity Law, effective from 1 September 2016, will allow a far greater number of associations—potentially in the hundreds of thousands—to raise funds from the general public. We expect the rapid expansion in both the size and scale of the Chinese non-profit sector will radically increase its impact on the state-society relationship.

Our results here provide important clues for the effects of this further development. The relationship we find between government presence and network position suggest intriguing possibilities for the emergence of new coordinating hubs independent of government influence. Closer examination of the nature of the highest degree nodes, however, suggests that our results provide at best ambiguous support for the bottom-up organization of truly autonomous non-government actors.

Acknowledgments

J.M. thanks Dr. Zhaonan Zhu, Assistant Professor of Public Administration at Beijing University of Chemical Technology, and Bin Chen, Ph.D. student at Renmin University of China, for assistance with coding; Qun Wang, Ph.D. candidate at Indiana University, and the RICF data quality team members, for data collection and data quality control; Dr. Peter Frumkin at the University of Pennsylvania, the 2016 Penn Summer Doctoral Fellows Program fellows. We thank Bradi Heaberlin and Torrin Liddell for their valuable comments. The RICF project is supported in part by the Dunhe Foundation. S.D. thanks the Santa Fe Institute for their hospitality while this work was completed.

Total Numbers			Yearly Income		
	Non-sensitive	Sensitive		Non-sensitive	Sensitive
Public	954 (28%)	356 (11%)	Public	13.9 B¥	3.2 B¥
Non-Public	1913 (57%)	121 (3%)	Non-Public	17.5 B¥	0.7 B¥

Table 1: Foundation status, activity, and yearly budgets (in billions of *yuan*; 1 B¥ \approx 150 M\$ in 2016) for the 3,344 foundations in our database. The majority of the foundations are concerned with neutral (non-sensitive) activities, and the majority are restricted to private fundraising. Despite the fact that non-public foundations can not raise money from the general public, they actually control the majority of nonprofit revenue in the network.

Official or Retired-Official President (Hand-coded subset)			Official Principal (Self-reports)		
	Non-Sensitive	Sensitive		Non-Sensitive	Sensitive
Public	74% \pm 3%	79% \pm 5%	Public	34% \pm 1%	54% \pm 3%
Non-Public	41% \pm 3%	29% \pm 9%	Non-Public	9% \pm 2%	19% \pm 4%

Table 2: Government presence on foundation boards is widespread, but variable. Despite explicit laws against the practice, foundations often have government officials as board principals. Hand-coding of a subset of 520 foundation presidents (left panel) shows that the practice of incorporating current or retired government officials is widespread. In both hand-coded data, and self-reports in annual filings (right panel), foundations able to raise funds from the general public, and foundations concerned with government unfavorable activities, are more likely to be controlled in this fashion.

	Public	Non-Public
Central	82% \pm 1%	72% \pm 1%
Provincial	47% \pm 2%	36% \pm 2%
City	67% \pm 1%	24% \pm 1%

Table 3: The board interlock network extends to a significant fraction of all Chinese non-profits. Here we show the fraction of nodes of each type that share board members with other foundations. Both public and non-public fundraising foundations are highly integrated into the overall network, with central-level foundations able to raise from the general public the most connected of all.

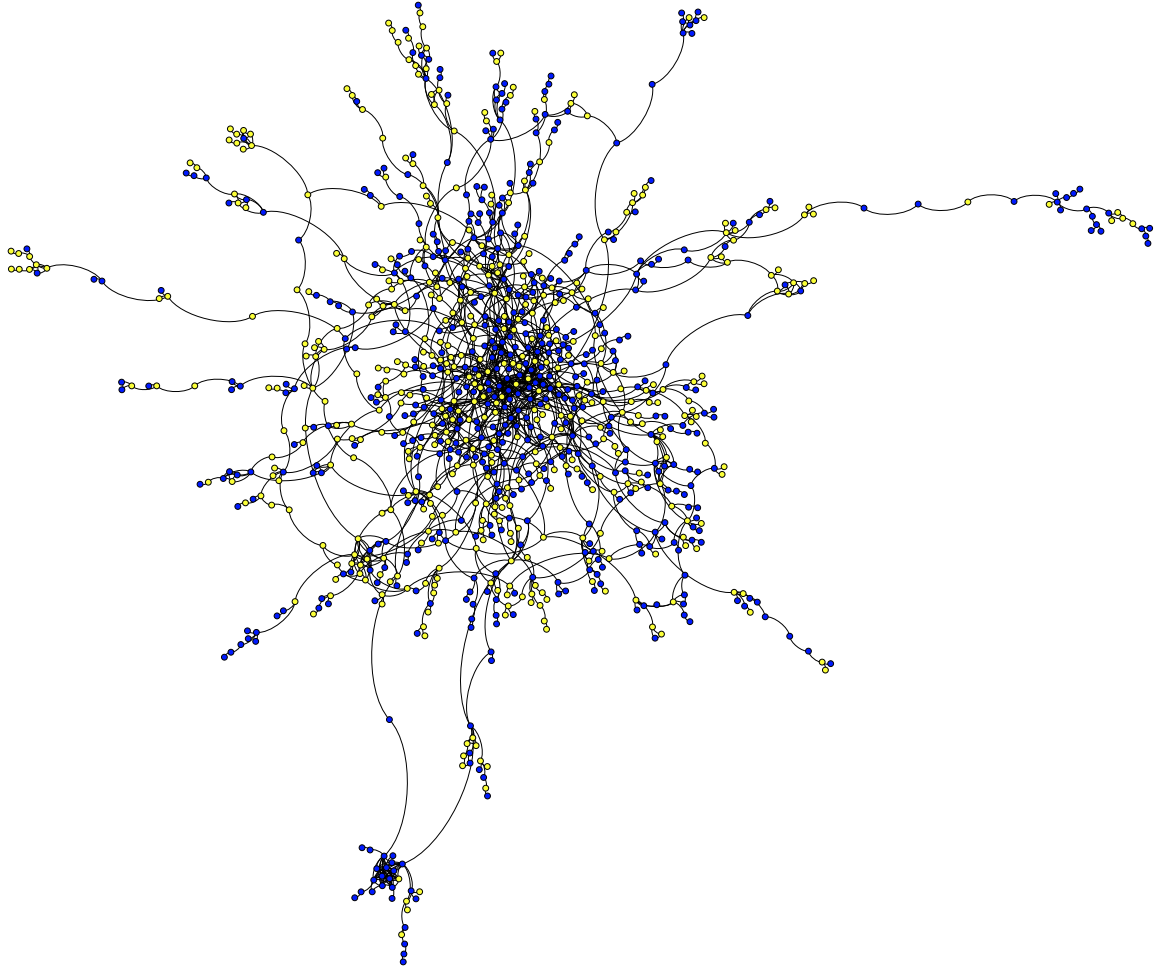


Figure 1: The giant component of the board interlock network, containing 1022 nodes and 1626 edges; 75% of the nodes with non-zero degree, and 30% of the full database. Public fundraising foundations are labeled in yellow, non-public fundraising in blue. A simple spring loaded network layout algorithm allows us to visualize which nodes are tightly coupled to many others (end up at the center), and which are connected to the main network by only a small number of links to peripheral nodes. At the center are a small number of interlinking elite super-connectors with high degree (Fig. 2; Fig. 3).

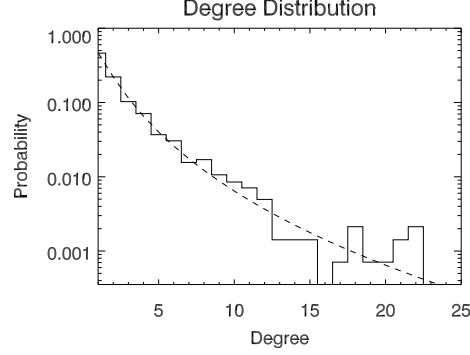


Figure 2: The emergence of network elites, as seen in the degree distribution of the board interlock network. The distribution is log-normal (dashed-line fit), and a small fraction of the nodes have unusually high degree.

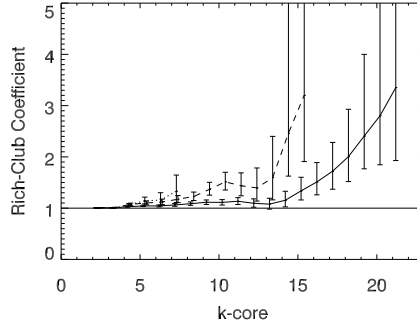


Figure 3: Network elites preferentially connect to other network elites, particularly in the non-public network. This is apparent in how the rich-club coefficient grows as a function of k -core level for the full network (solid line), the public network (dotted line), and the non-public network (dashed line); 95% confidence ranges are shown. Nodes with high degree are far more likely to connect to each other, compared to a null model that preserves the degree distribution but otherwise breaks interlock correlations [61]. Taken separately, the non-public network shows a stronger rich club effect than the network as a whole. Meanwhile, the majority of high-degree links in the public network are due to cross-links with the non-public foundations; the maximal degree for the public network in isolation is much smaller.

	Central	Province	City
Central	$\times \mathbf{2.1 \pm 0.1}$	$\times 0.73 \pm 0.03$	$\times 1.2 \pm 0.2$
Province (same)	—	$\times \mathbf{7.05 \pm 0.08}$	$\times 4.7 \pm 0.5$
Province (different)	—	$\times 0.42 \pm 0.01$	$\times 0.46 \pm 0.05$
City (same)	—	—	$\times \mathbf{14.6 \pm 0.9}$
City (different)	—	—	0

Table 4: Foundations in the same region, and at the same registration level, tend to cross link. This can be seen by comparing the number of links found between nodes of each type to a degree-preserving null. Centrally-registered foundations are more than twice as likely to connect to each other than in the null; province-level foundations connect to others in the same province at rates seven times higher than the null, and city-level foundations are the most cross-linked of all, linking to other city-level foundations in the same place at rates 14 times higher than expected.

Predictor	Public Network	Non-Public Network	Joint Network
(Legal Status)			
Central Level	$\mathbf{0.72 \pm 0.15^{***}}$	$\mathbf{0.90 \pm 0.16^{***}}$	$\mathbf{1.6 \pm 0.2^{***}}$
Evaluation 3A+	$\mathbf{0.33 \pm 0.12^{***}}$	$\mathbf{0.55 \pm 0.12^{***}}$	$\mathbf{0.66 \pm 0.12^{***}}$
Public	—	—	-0.1 ± 0.1
(State Power)			
Current Official	$\mathbf{0.17 \pm 0.08^*}$	$-\mathbf{0.44 \pm 0.13^{***}}$	-0.15 ± 0.11
Retired, Senior Official	0.0 ± 0.1	0.1 ± 0.2	0.2 ± 0.2
(Intrinsic)			
Board Size (z)	$\mathbf{0.31 \pm 0.04^{***}}$	$\mathbf{0.28 \pm 0.04^{***}}$	$\mathbf{0.52 \pm 0.04^{***}}$
Income (z)	$\mathbf{0.19 \pm 0.04^{***}}$	$\mathbf{0.16 \pm 0.04^{***}}$	$\mathbf{0.40 \pm 0.04^{***}}$
Age (z)	-0.03 ± 0.05	0.00 ± 0.04	-0.06 ± 0.04
Sensitive Area	-0.10 ± 0.08	$\mathbf{0.33 \pm 0.16^*}$	0.13 ± 0.11
	$R = 0.42$	$R = 0.34$	$R = 0.44$

Table 5: Non-public foundations preferentially exclude current government officials from the highest degree nodes, even when controlling for other variables. This is seen in a simple linear regression, where we show predictors of node degree, in public and non-public fundraising networks, and in the joint network. (z) indicates z-scored transformed real variables; all other variables are binary for presence/absence.

Predictor	Public Network	Non-Public Network	Joint Network
(Legal Status) Central Level Public	$1.06 \pm 0.26^{***}$ —	$1.0 \pm 0.5^*$ —	$2.6 \pm 0.4^{***}$ -0.3 ± 0.3
(Government Control) President Official	0.06 ± 0.25	$-0.68 \pm 0.37^*$	$-0.65 \pm 0.34^*$
(Intrinsic) Board Size (z)	$0.42 \pm 0.09^{***}$	$0.60 \pm 0.19^{**}$	$0.81 \pm 0.16^{***}$
Income (z)	$0.28 \pm 0.09^*$	$0.38 \pm 0.18^*$	$0.75 \pm 0.15^{***}$
Age (z)	-0.04 ± 0.09	0.0 ± 0.2	0.0 ± 0.15
Sensitive Area	-0.40 ± 0.20	0.4 ± 0.6	-0.4 ± 0.4
	$R = 0.48$	$R = 0.32$	$R = 0.44$

Table 6: Use of a different, hand-coded dataset for government presence confirms the results of Table 5: non-public foundations preferentially exclude current government officials from the highest degree nodes. Predictors of node degree, in public and non-public fundraising networks, and in the joint network; hand-coded 3A. The “president official” code includes retired officials.

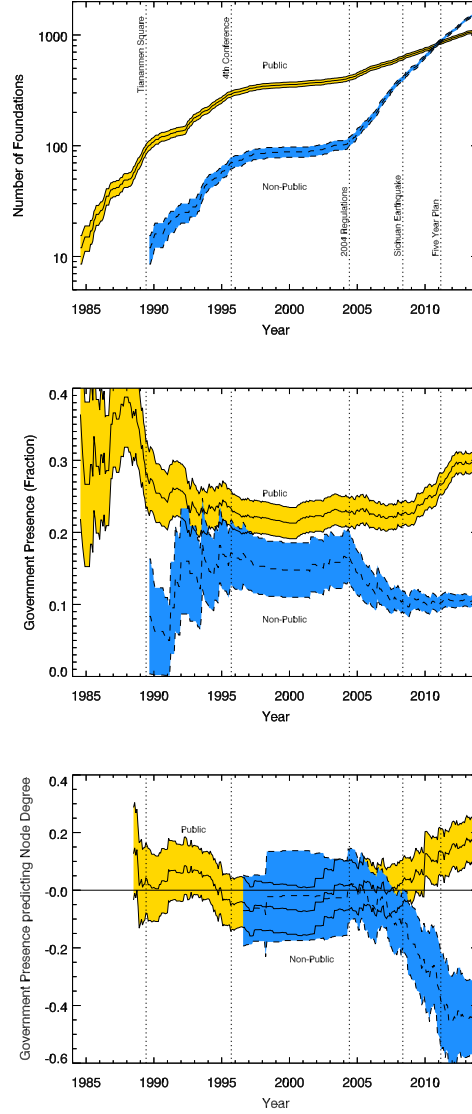


Figure 4: The emergence of elite autonomy. As the non-public network grew (top panel), it reported lower levels of government presence (middle panel); this contrasts with the growth of the public network which began to report increasing levels of government presence in the same period. In the years after 2008 (see text), the formation of new non-profits leads to the emergence of a detectably negative relationship between node degree and government presence in the non-public network (bottom panel): the highest degree nodes now appear to preferentially exclude government presence.

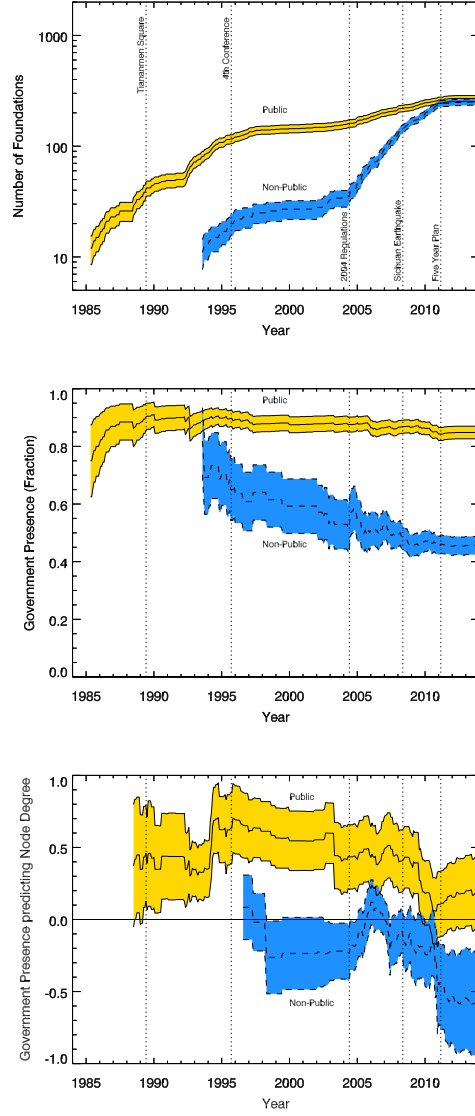


Figure 5: As in Fig. 4, but for the 3A+ hand-coded subset. Differences in overall levels of supervision are due both to reporting effects, and the necessary inclusion of retired officials in this set. Despite these coding differences, we see the same emergence of elite autonomy signal (bottom panel) as in the full network; here the signal becomes detectably negative after the introduction of the 2011 “Five Year Plan”.

- [1] M. Fennema, H. Schijf, Analysing interlocking directorates: Theory and methods, *Social Networks* 1 (4) (1978) 297 – 332. doi:[http://dx.doi.org/10.1016/0378-8733\(78\)90002-3](http://dx.doi.org/10.1016/0378-8733(78)90002-3).
- [2] B. Mintz, M. Schwartz, Interlocking directorates and interest group formation, *American Sociological Review* (1981) 851–869.
- [3] M. S. Mizruchi, What do interlocks do? an analysis, critique, and assessment of research on interlocking directorates, *Annual Review of Sociology* (1996) 271–298.
- [4] G. F. Davis, H. R. Greve, Corporate elite networks and governance changes in the 1980s, *American Journal of Sociology* 103 (1) (1997) 1–37.
- [5] D. D. Michael Dreiling, Corporate unity in American trade policy: A network analysis of corporate-dyad political action, *American Journal of Sociology* 116 (5) (2011) 1514–63.
URL <http://www.jstor.org/stable/10.1086/657524>
- [6] C. Pombo, L. H. Gutiérrez, Outside directors, board interlocks and firm performance: Empirical evidence from Colombian business groups, *Journal of Economics and Business* 63 (4) (2011) 251–277.
- [7] L. Faulk, J. Willems, J. McGinnis Johnson, A. J. Stewart, Network connections and competitively awarded funding: The impacts of board network structures and status interlocks on nonprofit organizations foundation grant acquisition, *Public Management Review* (2015) 1–31.
- [8] M. S. Mizruchi, *The American corporate network, 1904–1974*, Vol. 138, Sage Publications, Inc, 1982.
- [9] B. A. Mintz, M. Schwartz, *The power structure of American business*, University of Chicago Press, 1985.
- [10] R. S. Burt, *Corporate profits and cooptation*, Academic Press, New York, 1983.
- [11] T. Pedersen, S. Thomsen, European patterns of corporate ownership: A twelve-country study, *Journal of International Business Studies* (1997) 759–778.

- [12] C. W. Mills, *The Power Elite*, Oxford University Press, 1956.
- [13] G. F. Davis, M. Yoo, W. E. Baker, The small world of the American corporate elite, 1982–2001, *Strategic organization* 1 (3) (2003) 301–326.
- [14] C. R. Avina-Vazquez, S. Uddin, Network of board of directors in Mexican corporations: A social network analysis, in: *APIRA Conference Proceedings*, 2013.
URL <http://www.apira2013.org/proceedings/pdfs/K196.pdf>
- [15] J. Galaskiewicz, W. Bielefeld, M. Dowell, Networks and organizational growth: A study of community based nonprofits, *Administrative Science Quarterly* 51 (3) (2006) 337–380.
- [16] N. Esparza, S. H. Jeon, Interlocking boards of trustees and grant acquisition among homeless service organizations, *Public Performance & Management Review* 36 (4) (2013) 637–664.
- [17] G. Moore, S. Sobieraj, J. A. Whitt, O. Mayorova, D. Beaulieu, Elite interlocks in three u.s. sectors: Nonprofit, corporate, and government, *Social Science Quarterly* 83 (3) (2002) 726–744.
URL <http://www.jstor.org/stable/42955819>
- [18] F. A. Hayek, The use of knowledge in society, *The American Economic Review* 35 (4) (1945) 519–530.
URL <http://www.jstor.org/stable/1809376>
- [19] M. Mann, The autonomous power of the state: its origins, mechanisms and results, *European Journal of Sociology* 25 (02) (1984) 185–213.
- [20] Z. Ye, *China’s emerging civil society*, Brookings Institution Center for Northeast Asian Policy Studies, 2003.
- [21] Q. Ma, The governance of NGOs in China since 1978: how much autonomy?, *Nonprofit and Voluntary Sector Quarterly* 31 (3) (2002) 305–328.
- [22] J. C. Teets, Let many civil societies bloom: The rise of consultative authoritarianism in China, *The China Quarterly* 213 (2013) 19–38.
doi:10.1017/S0305741012001269.
URL http://journals.cambridge.org/article_S0305741012001269

- [23] A. de Tocqueville, *Democracy in America*, University of Chicago Press, Chicago, IL, USA, 2000, edited and translated by Harvey C. Mansfield and Delba Winthrop. Book II, Chapter 5.
- [24] M. Walzer, The civil society argument, in: C. Mouffe (Ed.), *Dimensions of Radical Democracy: Pluralism, Citizenship, Community*, Verso, London, 1992, pp. 89–107.
- [25] A. J. Spires, Contingent symbiosis and civil society in an authoritarian state: Understanding the survival of Chinas grassroots NGOs, *American Journal of Sociology* 117 (1) (2011) 1–45.
URL <http://www.jstor.org/stable/10.1086/660741>
- [26] M. W. Foley, B. Edwards, The paradox of civil society, *Journal of Democracy* 7 (3) (1996) 38–52.
- [27] M. C. Keith Zhai, Provincial chiefs named as a new generation steps up, *South China Morning Post*.
URL <http://www.scmp.com/news/china/article/1195746/provincial-chiefs-named-new-generation-steps>
- [28] S. H. Whiting, The politics of NGO development in China, *Voluntas: International Journal of Voluntary and Nonprofit Organizations* 2 (2) (1991) 16–48.
- [29] P. C. Schmitter, Still the century of corporatism?, *The Review of Politics* 36 (01) (1974) 85–131.
- [30] X. Kang, H. Han, Graduated Controls The State-Society Relationship in Contemporary China, *Modern China* 34 (1) (2008) 36–55, c48. doi: 10.1177/0097700407308138.
URL <http://mcx.sagepub.com/content/34/1/36>
- [31] C. Hsu, Beyond Civil Society: An Organizational Perspective on State–NGO Relations in the People’s Republic of China, *Journal of Civil Society* 6 (3) (2010) 259–277. doi:10.1080/17448689.2010.528949.
URL <http://dx.doi.org/10.1080/17448689.2010.528949>
- [32] J. Y. Hsu, C. L. Hsu, R. Hasmath, NGO strategies in an authoritarian context, and their implications for citizenship: The case of the People’s Republic of China, Available at SSRN 2657187.

- [33] R. J. Estes, Emerging Chinese foundations: The role of private philanthropy in the new China, *Regional Development Studies* 4. (1998)
- [34] T. Saich, Negotiating the state: The development of social organizations in China, *The China Quarterly* 161 (2000) 124–141.
URL <http://www.jstor.org/stable/655983>
- [35] L. Yiyi, The autonomy of Chinese NGOs: a new perspective, *China: An International Journal* 5 (02) (2007) 173–203.
- [36] T. Salmenkari, Theoretical Poverty in the Research on Chinese Civil Society, *Modern Asian Studies* 47 (02) (2013) 682–711.
doi:10.1017/S0026749X12000273.
URL http://www.journals.cambridge.org/abstract_S0026749X12000273
- [37] M. Mann, *The Sources of Social Power: Volume 1, A History of Power from the Beginning to AD 1760*, Cambridge University Press, Cambridge, UK, 1986.
- [38] J. Ma, Q. Wang, C. Dong, H. Li, The research infrastructure of China foundations: Database introduction and user manual, Available at SSRN 2673879 <http://ssrn.com/abstract=2673879>; data available at <http://ricf.org.cn/>.
- [39] Ministry of Civil Affairs of China, 2013 statistics bulletin, available at <http://www.mca.gov.cn/article/zwgk/mzyw/201406/20140600654488.shtml>; last accessed 25 June 2016.
- [40] M. Dai, Policing in the People’s Republic of China: a review of recent literature, *Crime, Law and Social Change* 50 (3) (2008) 211–227.
- [41] A. Y. Jiao, Police and culture: A comparison between China and the United States, *Police Quarterly* 4 (2) (2001) 156–185.
- [42] D. D. Li, Changing incentives of the chinese bureaucracy, *The American Economic Review* 88 (2) (1998) 393–397.
URL <http://www.jstor.org/stable/116954>
- [43] J. H. Levine, The network of corporate interlocks in the United States: An overview, in: *American Sociological Association Annual Meeting*,

- 1977, cited in Ref. [13].
 URL <http://www.dartmouth.edu/~jlevine/Corporate1977.pdf>
- [44] A. Clauset, C. R. Shalizi, M. E. Newman, Power-law distributions in empirical data, *SIAM Review* 51 (4) (2009) 661–703.
 - [45] J. Alstott, E. Bullmore, D. Plenz, powerlaw: A python package for analysis of heavy-tailed distributions, *PLoS ONE* 9 (1) (2014) 1–11. doi:10.1371/journal.pone.0085777.
 - [46] S. Zhou, R. J. Mondragón, The rich-club phenomenon in the internet topology, *IEEE Communications Letters* 8 (3) (2004) 180–182. doi:10.1109/LCOMM.2004.823426.
 - [47] T. E. Stuart, Network positions and propensities to collaborate: An investigation of strategic alliance formation in a high-technology industry, *Administrative Science Quarterly* (1998) 668–698.
 - [48] O. Sorenson, T. E. Stuart, Syndication networks and the spatial distribution of venture capital investments, *American Journal of Sociology* 106 (6) (2001) 1546–1588.
 - [49] J. Owen-Smith, W. W. Powell, Knowledge networks as channels and conduits: The effects of spillovers in the boston biotechnology community, *Organization Science* 15 (1) (2004) 5–21.
 - [50] Q. Ma, *Non-Governmental Organizations in Contemporary China: Paving the Way to Civil Society?*, Routledge Contemporary China Series, Taylor & Francis, 2005.
 URL <https://books.google.com/books?id=07KTtSVH2hUC>
 - [51] S. Shieh, G. Deng, An Emerging Civil Society: The Impact of the 2008 Sichuan Earthquake on Grass-roots Associations in China, *The China Journal* 65 (2011) 181–194, c48.
 URL <http://www.jstor.org/stable/25790563>
 - [52] R. Zhang, Z. Rezaee, J. Zhu, Corporate philanthropic disaster response and ownership type: Evidence from chinese firms response to the sichuan earthquake, *Journal of Business Ethics* 91 (1) (2010) 51–63.

- [53] F. N. Pieke, The Communist Party and social management in China, *China Information* 26 (2) (2012) 149–165, c20.
URL <http://cin.sagepub.com/content/26/2/149.short>
- [54] J. Schlæ ger, M. Jiang, Official microblogging and social management by local governments in china, *China Information* 28 (2) (2014) 189–213.
doi:10.1177/0920203X14533901.
URL <http://cin.sagepub.com/content/28/2/189.abstract>
- [55] S.-J. Shi, The bounded welfare pluralism: public–private partnerships under social management in China, *Public Management Review* (2016) 1–16doi:10.1080/14719037.2016.1183700.
- [56] W. Shan, Social Management: China Goes beyond Maintaining Social Stability, *East Asian Policy* 05 (02) (2013) 36–46.
doi:10.1142/S1793930513000147.
URL <http://www.worldscientific.com/doi/abs/10.1142/S1793930513000147>
- [57] M. S.-Y. Chwe, Structure and strategy in collective action, *American Journal of Sociology* 105 (1) (1999) 128–156.
- [58] T. M. Liddell, S. DeDeo, Common knowledge on networks
arXiv:1507.08282.
URL <https://arxiv.org/abs/1507.08282>
- [59] M. M. Pearson, *China’s New Business Elite: The Political Consequences of Economic Reform*, University of California Press, 1997.
- [60] D. Ma, W. L. Parish, Tocquevillian Moments: Charitable Contributions by Chinese Private Entrepreneurs, *Social Forces* 85 (2) (2006) 943–964.
URL <http://www.jstor.org/stable/4494945>
- [61] J. J. McAuley, L. da Fontoura Costa, T. S. Caetano, Rich-club phenomenon across complex network hierarchies, *Applied Physics Letters* 91 (8) (2007) 084103.